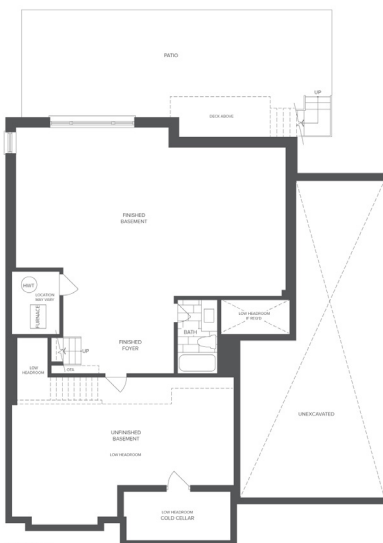
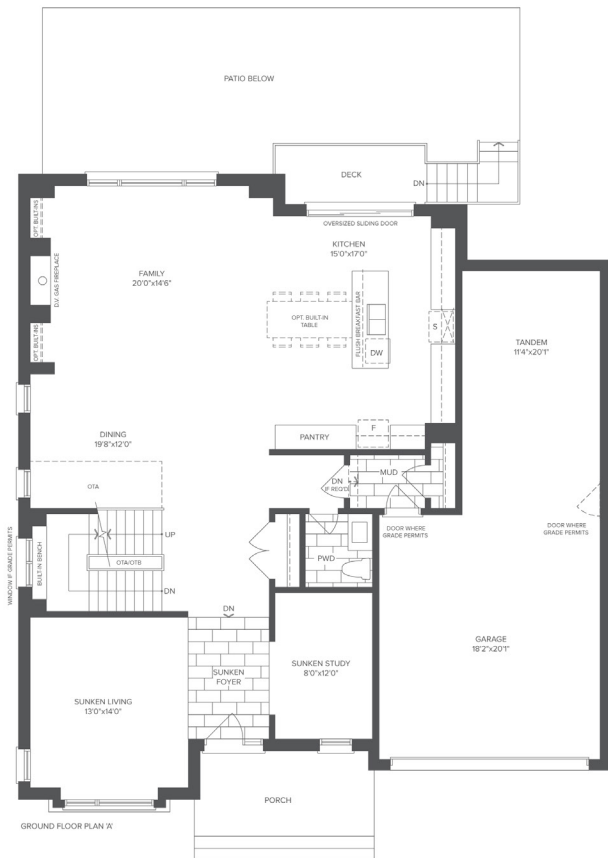


# LIMERICK POINT

## THE HILLSIDE HOUSE

4573 SQ. FT.  
INCLUDES 992 SQ. FT. FINISHED BASEMENT



ALL AREAS AND STATED ROOM DIMENSIONS ARE APPROXIMATE. SIZES AND SPECIFICATIONS ARE SUBJECT TO CHANGE WITHOUT NOTICE. ACTUAL USEABLE FLOOR AREA MAY VARY FROM STATED FLOOR AREA. ALL RENDERINGS AND HOME SITINGS ARE ARTIST'S IMPRESSION. SQ. FT. INCLUDES FINISHED BASEMENT. 60-3 E. & O. E. © THE ACORN DEVELOPMENT CORPORATION